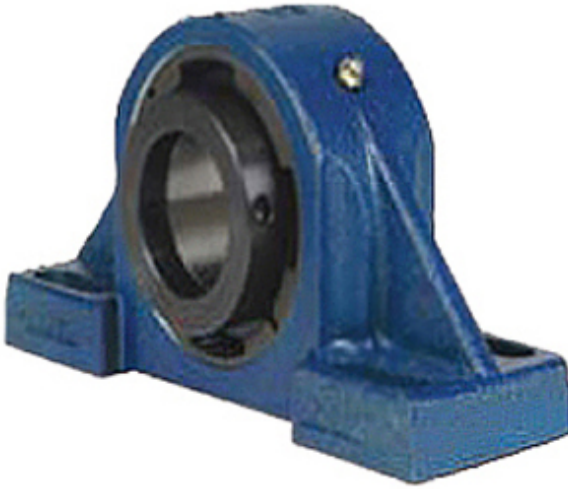




# NYHG BEARING Manufacturing India Priv...



QVVPG20V308SC Bearing 2D drawings and 3D CAD models

3.5 Inch | 88.9 Millimeter x 4.63 Inch | 117.602 Millimeter x 4.409 Inch | 112 Millimeter QM INDUSTRIES QVVPG20V308SC Pillow Block Bearings

Bearing No. QVVPG20V308SC

|                           |   |
|---------------------------|---|
| Category                  | Pillow Block Bearings   |
| Inventory                 | 0.0   |
| Manufacturer Name         | TIMKEN  |
| Minimum Buy Quantity      | N/A   |
| Weight                    | 27.24   |
| EAN                       | 0883450221306   |
| Product Group             | M06288  |
| Number of Mounting Holes  | 4   |
| Mounting Method           | V Lock  |
| Housing Style             | 4 Bolt Pillow Block   |
| Rolling Element           | Spherical Roller Bearing  |
| Housing Material          | Cast Steel  |
| Expansion / Non-expansion | Non-expansion   |
| Mounting Bolts            | 3/4 Inch  |
| Relubricatable            | Yes   |
| Insert Part Number        | 22220   |
| Seals                     | Double Lip Viton  |
| Housing Configuration     | 1 Piece Solid   |
| Inch - Metric             | Inch  |
| Other Features            | Double Row   Double Nut   SN Style  |
| Long Description          | 4 Bolt Pillow Block; 3-1/2" Bore; 4.409" Base to Center Height; V Lock Mount; Spherical Roller Bearing; |



## NYHG BEARING Manufacturing India Priv...

|                               |  |
|-------------------------------|--|
|                               | 10-7/8" Minimum Bolt Spacing; 13.38" Bolt Spacing Maximum; Relubricatable; C |
| Category                      | Pillow Block   |
| UNSPSC                        | 31171511   |
| Harmonized Tariff Code        | 8483.20.40.80  |
| Noun                          | Bearing  |
| Keyword String                | Pillow Block   |
| Manufacturer URL              | <a href="http://www.qmbearings.com">http://www.qmbearings.com</a>            |
| Manufacturer Item Number      | QVVPG20V308SC  |
| Weight / LBS                  | 70   |
| Bolt Spacing Minimum          | 10.875 Inch   276.225Millimeter  |
| B                             | 4.409 Inch   112 Millimeter  |
| Bolt Spacing Maximum          | 13.38 Inch   339.852Millimeter   |
| d                             | 3.5 Inch   88.9 Millimeter   |
| Nominal Bolt Center to Center | 12.1 Inch   308.5 Millimeter   |
| D                             | 4.63 Inch   117.602 Millimeter   |
| Actual Bolt Center to Center  | 0 Inch   0Millimeter   |